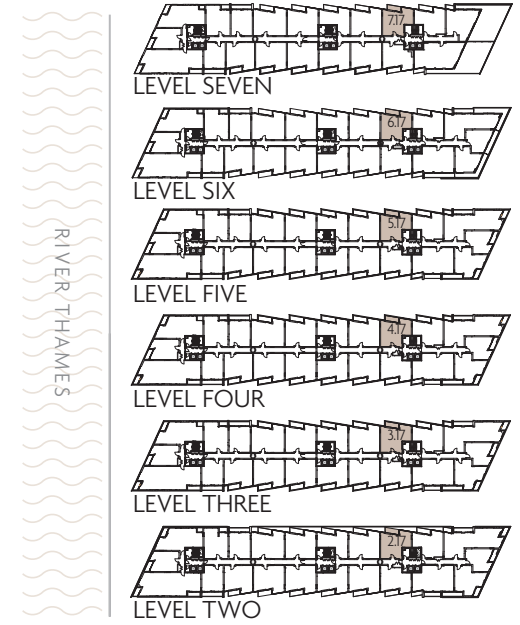
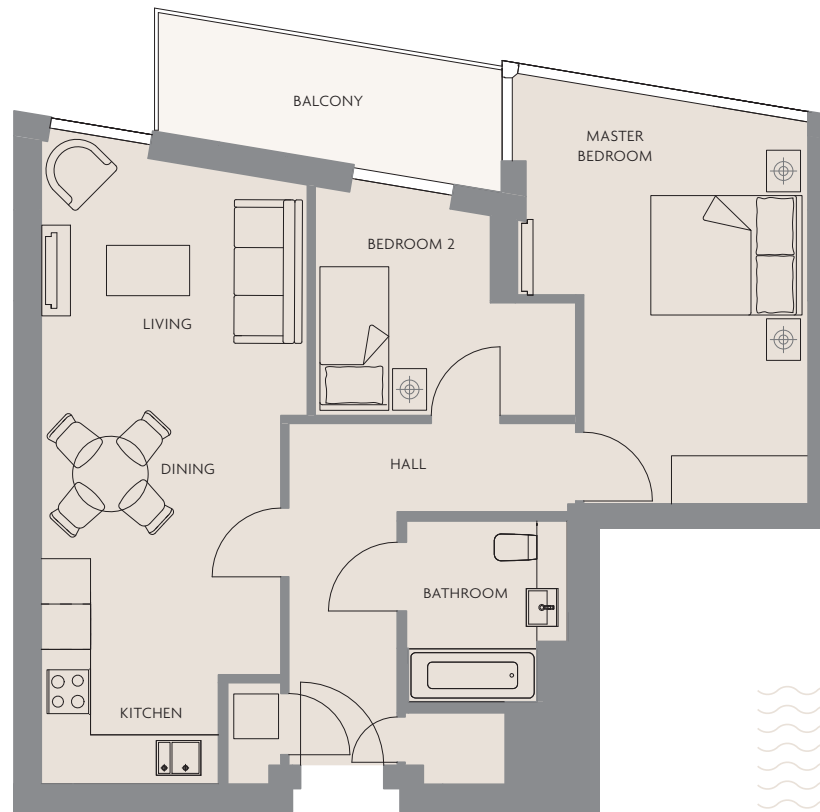


# APARTMENT TYPE 2.6B

TWO BEDROOM WITH BALCONY

2.17 3.17 4.17 5.17

6.17 7.17



## TOTAL INTERNAL AREA 71 SQM (764 SQFT)

RECEPTION	6.60m x 3.50m (21'11" x 11'6")
KITCHEN/DINING	2.90m x 2.30m (9'8" x 7'8")
MASTER BEDROOM	5.30m x 3.80m (17'7" x 12'7")
BEDROOM 2	3.40m x 3.00m (11'3" x 9'11")
BALCONY	1.50m x 4.60m (5'0" x 15'2")