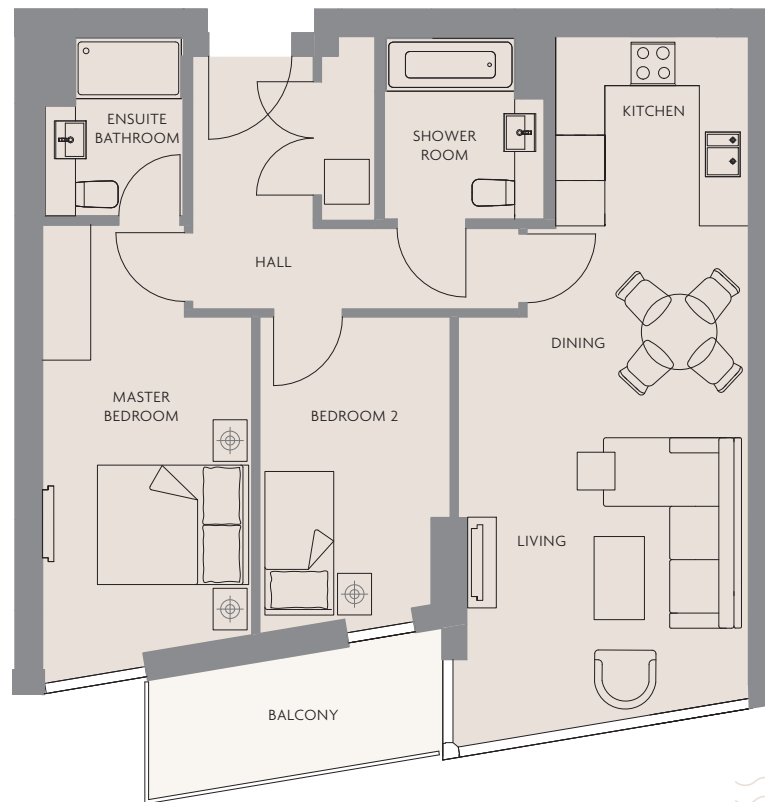


APARTMENT TYPE 2.8C

TWO BEDROOM WITH BALCONY

2.06 3.06 4.06 5.06

6.06 7.06



TOTAL INTERNAL AREA 76 SQM (818 SQFT)

RECEPTION	6.50m x 3.80m (21'4" x 12'7")
KITCHEN/DINING	2.50m x 2.50m (8'2" x 8'2")
MASTER BEDROOM	5.80m x 2.70m (19'3" x 9'1")
BEDROOM 2	4.20m x 2.50m (13'9" x 8'3")
BALCONY	1.50m x 3.90m (5'0" x 13'0")

