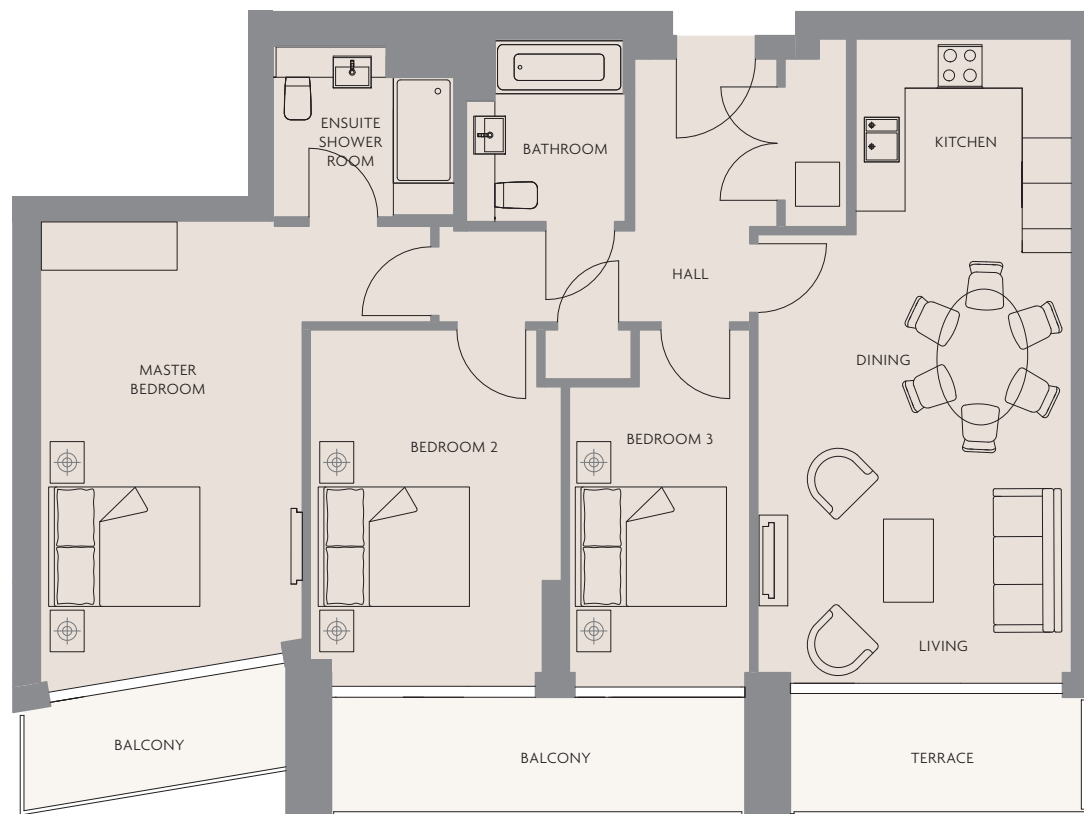


# APARTMENT TYPE 3.2A

THREE BEDROOM WITH BALCONIES & TERRACE

2.18 6.18

APARTMENTS IN LIGHT GREY ARE AVAILABLE WITH WHEELCHAIR ACCESSIBLE LAYOUT



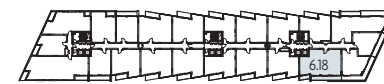
## TOTAL INTERNAL AREA 105 SQM (1130 SQFT)

RECEPTION	5.70m x 4.10m (19'0" x 13'7")
KITCHEN/DINING	2.80m x 2.80m (9'4" x 9'13")
MASTER BEDROOM	6.10m x 3.40m (20'0" x 11'4")
BEDROOM 2	4.50m x 3.30m (14'10" x 11'0")
BEDROOM 3	4.50m x 2.30m (14'10" x 7'10")

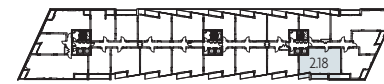
BALCONIES & TERRACE 1.50m x 3.80m + 1.50m x 5.40m + 1.30m x 3.40m (5'0" x 12'7" + 5'0" x 17'5" + 4'5" x 11'4")



SEE PAGE 72  
FOR WHEELCHAIR  
ACCESSIBLE PLAN



LEVEL SIX



LEVEL TWO