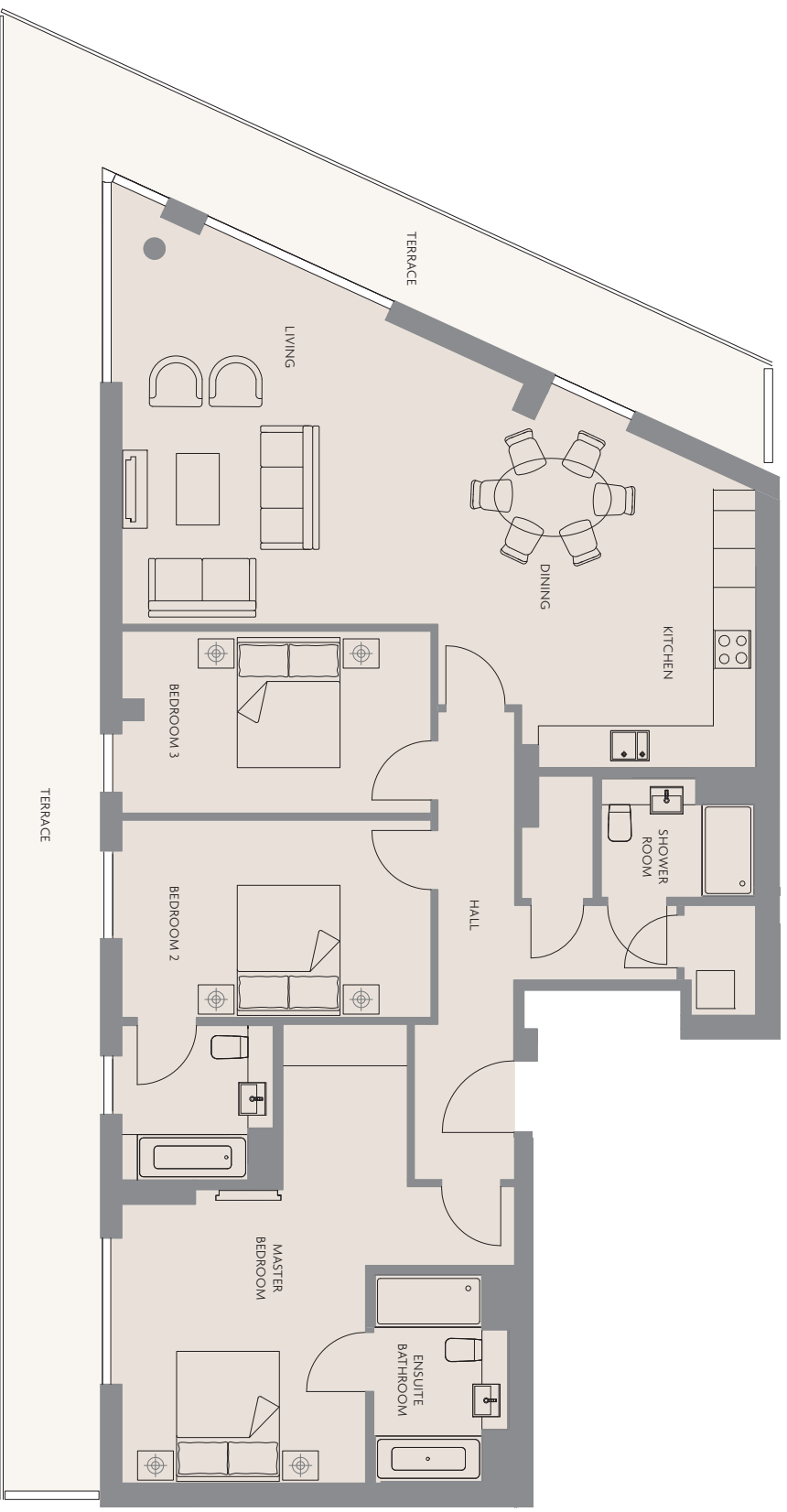


# APARTMENT TYPE 3.4A

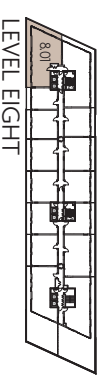
## THREE BEDROOM WITH TERRACE

8.01



### TOTAL INTERNAL AREA 141 SQM (1517 SQFT)

RECEPTION	780m x 620m (25'11" x 20'6")
KITCHEN/DINING	430m x 330m (14'1" x 10'11")
MASTER BEDROOM	700m x 600m (23'2" x 19'10")
BEDROOM 2	470m x 300m (15'7" x 9'11")
BEDROOM 3	470m x 280m (15'2" x 9'2")
TERRACE	13.20m x 150m + 22.70m x 150m (43'6" x 5'0" + 74'7" x 5'0")



The plans and dimensions shown here are approximate and measurements may vary within a tolerance of 5%. Kitchen layouts are subject to minor variation. Please note: some plans have been scaled to fit the page and therefore may be a different scale to others within the brochure.