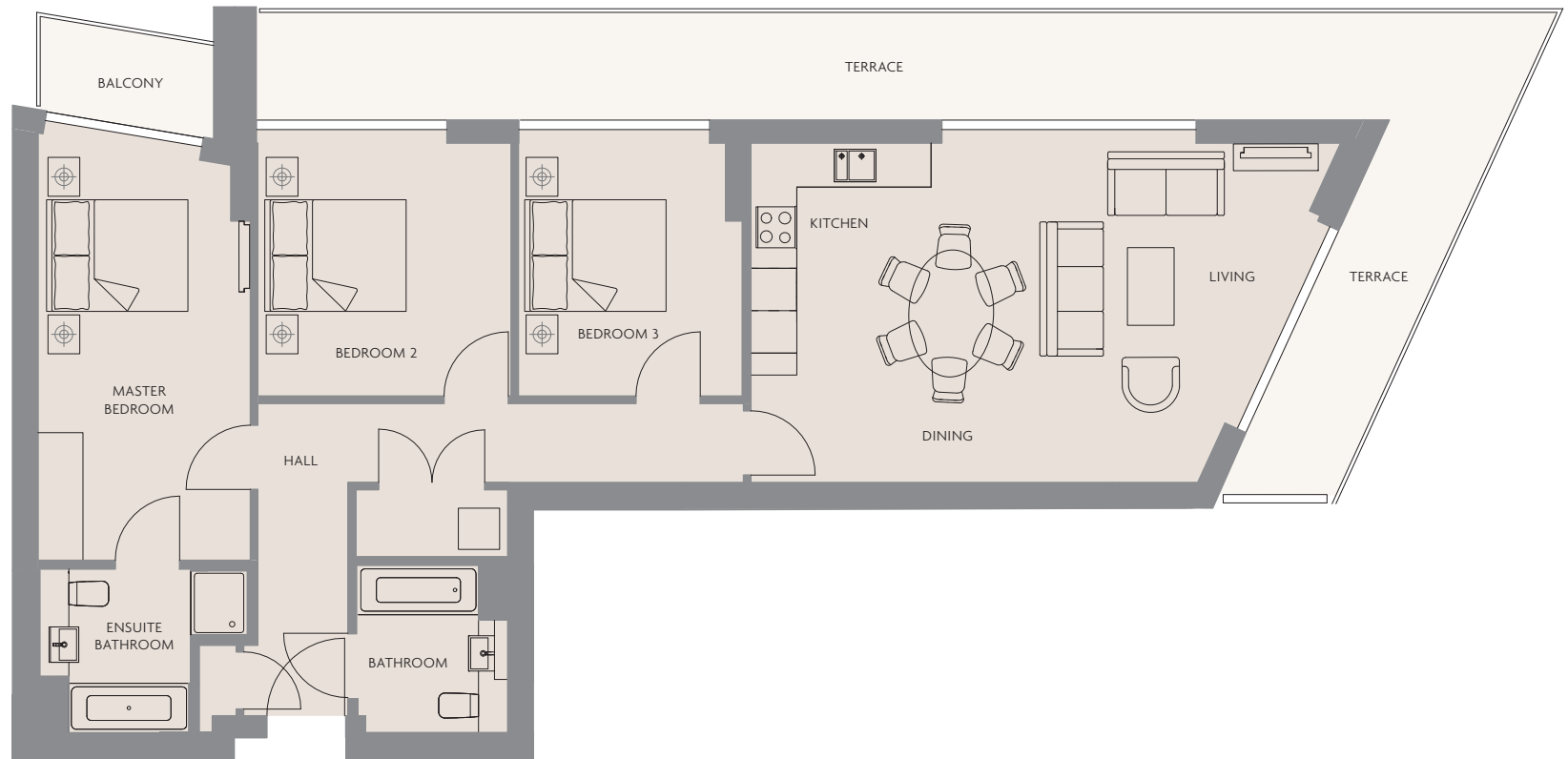


APARTMENT TYPE 3.3B

THREE BEDROOM WITH BALCONY & TERRACE

6.21



TOTAL INTERNAL AREA 106 SQM (1140 SQFT)

RECEPTION	7.10m x 4.80m (23'6" x 15'9")
KITCHEN/DINING	2.90m x 2.50m (9'9" x 8'4")
MASTER BEDROOM	6.00m x 3.00m (19'9" x 9'10")
BEDROOM 2	3.50m x 3.50m (11'9" x 11'9")
BEDROOM 3	3.50m x 3.10m (11'9" x 10'4")
BALCONY & TERRACE	2.40m x 1.30m + 18.40m x 1.50m + 8.80m x 1.50m (8'2" x 4'7" + 60'6" x 5'0" + 25'9" x 5'0")

