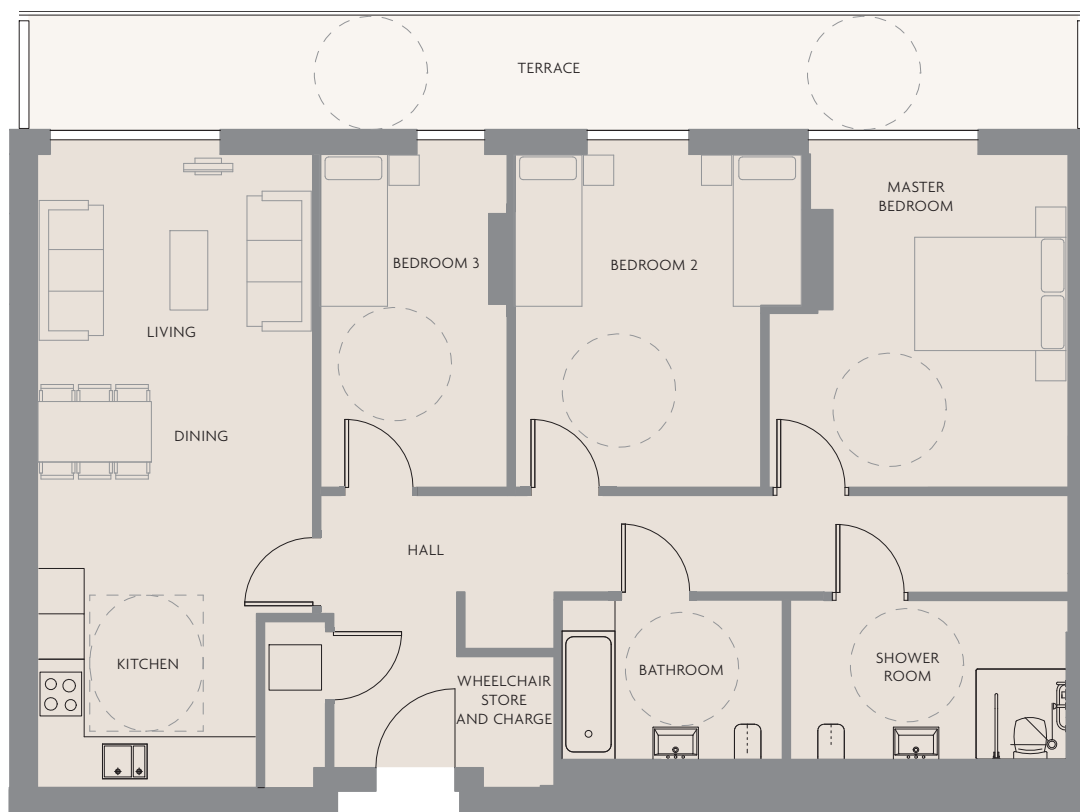


APARTMENT TYPE 3.6A
WHEELCHAIR ACCESSIBLE



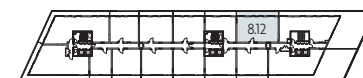
THREE BEDROOM WITH TERRACE

8.12



TOTAL INTERNAL AREA
113 SQM (1216 SQFT)

RECEPTION	5.40m x 3.60m (18'0" x 11'11")
KITCHEN/DINING	2.90m x 2.30m (9'6" x 8'1")
MASTER BEDROOM	4.40m x 3.90m (14'5" x 13'0")
BEDROOM 2	4.40m x 3.80m (14'5" x 12'5")
BEDROOM 3	4.40m x 2.40m (14'5" x 8'1")
TERRACE	13.80m x 1.50m (5'0" x 4'56")



LEVEL EIGHT